

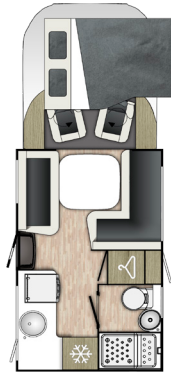
THE 2021 PRIMERO RANGE

Weights & Dimensions

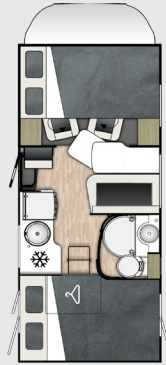


2021 PRIMERO RANGE

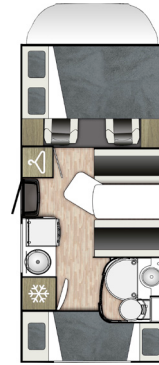
Primero 202



Primero 301



Primero 313



Primero 331



Fiat Multijet Diesel Engine	140bhp 2.3L Manual	140bhp 2.3L Manual	140bhp 2.3L Manual	140bhp 2.3L Manual				
Wheelbase (mm)	3800	3450	3800	3450				
Approved belted travel seats (including driver)								
Berths (sleeping positions)								
Overall length	5990mm 19'8"	5990mm 19'8"	5990mm 19'8"	5990mm 19'8"				
Overall width (inc mirrors)	2750mm/9'0"	2750mm/9'0"	2750mm/9'0"	2750mm/9'0"				
Overall width (mirrors folded)	2300mm/7'7"	2300mm/7'7"	2300mm/7'7"	2300mm/7'7"				
Overall height (inc tv aerial)	2890mm/9'6"	3050mm/10'0"	3050mm/10'0"	3050mm/10'0"				
Rear garage dimensions	1900/830(h) x 535(w) x 380/945(d)	975(h) x 760(w) x 2175(d)	975(h) x 760(w) x 2175(d)	620(h) x 1025(w) x 830(d)				
TYRES								
Tyre size	225/75 R16	225/75 R16	225/75 R16	225/75 R16				
Tyre pressure at Psi - Front Rear	79.5	79.5	79.5	79.5				
WEIGHTS & TOWING								
MTPLM (kg) (A)	3500	3650	3500	3650	3500	3650	3500	3650
Mass in Running Order (kg) (B)	2870		2870		2910		2860	
Maximum User Payload (kg) (A-B)	630	780	630	780	590	740	640	790
Unladen Weight (kg)	2710		2710		2750		2700	
Max. front axle weight (kg)	1850	1850	1850	1850	1850	1850	1850	1850
Max. rear axle weight (kg)	2000	2000	2000	2000	2000	2000	2000	2000
Max. towing limit (kg) (Manual & Automatic Engines)	2000	1400	2000	1400	N/A	1400	2000	1400
Gross Train Weight (kg)	5500	5050	5500	5050	3500	5050	5500	5050
BED SIZES								
Overcab/Drop Down Bed	1 x Drop Down Double 1400mm x 1900mm 4'7" x 6'3"	1 x Hinged Roof Double 1550mm x 2050mm 5'1" x 6'9"	1 x Hinged Roof Double 1550mm x 2050mm 5'1" x 6'9"	1 x Hinged Roof Double 1550mm x 2050mm 5'1" x 6'9"				
Front Lounge Bed	1 x Double 1200mm x 2100mm 3'11" x 6'11"	N/A	1 Double 1300mm x 1700mm 4'3" x 5'7"	N/A				
Fixed Rear Bed Size	N/A	1 x Double 1390mm x 2000mm 4'7" x 6'7"	2 Bunk Beds 800mm x 2000mm 2'8" x 6'7"	1 x Double 1360mm x 1900mm 4'6" x 6'3"				

THE 2021 PRIMERO RANGE

SPECIFICATION

CHASSIS

- Fiat Ducato Euro 6D Chassis with 140hp and 6 speed gearbox
- Automatic gearbox available as a cost option
- 2 year Fiat chassis warranty
- 90L Fuel tank

DRIVER SAFETY

- NCC approval and full UK specification
- Driver and passenger airbag
- Cruise control
- ABS and ESP
- Increased rear axle width 1980mm for better stability
- Remote central locking of cab doors and immobiliser
- Puncture repair kit Fix & Go
- 16" Alloy wheels
- Electric windows
- Heated and electric wing mirrors
- Black front bumper

AUDIO SYSTEM

- High level touch screen DAB radio with bluetooth capabilities and USB MP3 player
- Media function controls on steering wheel
- External antenna
- NEW on/off isolator switch for radio

DRIVER COMFORT

- Air conditioning
- Key with Central locking
- Adjustable steering wheel
- On board computer
- Fully upholstered swivel seats with two armrests and height adjustment
- Door pockets and bottle holders
- 12v lighter socket and 1 USB
- External awning light
- Cabin reading lights and USB charger (202 and 283)
- Electric drop down bed (on selective models).

LIVING AREA

- Dometic Deluxe windows
- Marel ash and white style furniture
- Dometic Midi heki rooflights
- Multi positional space saving drop down beds with removable aluminium ladder (on selected models)
- Secure positive catches on all furniture door with soft closing hinges
- Fixed table
- Cab curtains
- NEW Ginebra color Upholstery

WARRANTY



For full warranty details please visit:

www.marquisleisure.co.uk/warranty

BODY CONSTRUCTION

- Habitation door on UK side
- GRP and 99% wood free construction
- 25 mm XPS insulation on sidewalls
- 53 mm XPS insulation on floor & roof (202)
- 30 mm XPS insulation on floor & roof (301, 313 and 331)
- High impact, scratch resistant flooring
- 120 litre fresh water tank isolated and heated with level sensor
- 105 litre waste water tank with level sensor
- Three point seat belts to all forward facing designated passenger seats
- High and low fixing points for optional rear mounted cycle rack
- Single key locking for habitation doors
- ABS lower moulded rear panel with integral lights
- High level brake light
- Colour coded side skirts
- Removable entrance mat
- High quality double glazed opening windows with night-latch ventilation
- Blinds for windows
- Gas bottle compartment
- Gas regulator suitable for butane or propane
- Entrance light

ELECTRICS, GAS AND PLUMBING

- 2 x 220 sockets
- 2x 12V sockets
- Mains consumer unit with mains isolator
- Truma combi 6kW on working on gas and electrics
- 16 amp battery charger
- Isolation taps for gas appliances
- External LED awning light
- Smoke alarm
- CO₂ alarm
- Leisure battery

KITCHEN

- Metal drawer runners with soft closing system
- Gas hob with glass lid, oven only
- Stainless steel sink with glass lid
- 80 litre fridge/freezer

WASHROOM

- Thetford cassette toilet with electric flush and 18 litre wheeled holding tank
- Chrome finish brass mixer taps and shower head
- Rooflight with flyscreen
- Towel holder
- Washbasin with single door cupboard below
- Fully separate shower
- Bathroom accessories

FABRIC OPTIONS

- Ginebra (standard)

THE 2021 PRIMERO RANGE

SPECIFICATION

IMPORTANT SPECIFICATION INFORMATION

Data & accuracy: The contents of this publication are as accurate as possible at the time of going to press (November 2020), but this brochure should not be regarded as an infallible guide to current specifications, nor does it constitute an offer for the sale of any particular vehicle. It's the continual policy of Fiat and Benimar to seek to improve their vehicles in every way and so whilst every effort has been made to ensure the details set out in this brochure were correct at the time of going to press, they are unable to accept responsibility for discrepancies between these and subsequent models shown. Benimar reserve the right to alter the specifications and price at any time without prior notice. Bedding and "dress" items shown in photography are used for illustrative purposes only and are not part of the vehicle specification. Details of performance, dimensions and weights are subject to minor deviations within manufacturer tolerance limits (max +/- 5%).

Note 1: The Mass In Running Order (MIRO) - Weight of the Motorhome equipped to the manufacturer's standard specification including essential habitational equipment.

Note 2: Maximum User Payload includes Personal Effects Payload, conventional load and the Optional Equipment Payload.

Note 3: Maximum Technically Permissible Laden Mass (MTPLM) - The technical maximum permissible laden weight of the Motorhome.

Note 4: Please ensure that you've allowed for the masses of all items you intend to carry in the Motorhome.

Note 5: All data is calculated using metric weights and measurements. The imperial figures quoted are conversions thereof and have been rounded to the nearest inch. All dimensions have a tolerance of +/- 25mm.

Note 6: Your Motorhome weights have been calculated with all water tanks empty and you are recommend to travel with all water tanks empty.

Note 7: Warning - Under no circumstances should the plated MTPLM of the Motorhome be exceeded.

Note 8: Heights are measured on an unladen vehicle with the aerial in the lowest position.

Note 9: The maximum weight capacity for an electric drop down bed is 250kg, fixed rear beds have a limit of 250kg, overcab beds are 250kg and bunk beds 100kg.

Note 10: Garage Dimensions quoted are "aperture" height and width and interior garage dimensions may vary.

IMPORTANT PRICING INFORMATION

Prices effective 1st November 2020. The base price is for the vehicle with its standard specification. The On the Road (OTR) price includes the cost of Number Plates, all delivery charges, First Year VED (Road Tax) and 1st Registration Fee (as set by H.M Government). VAT inclusive at 20%. Marquis Motorhomes & Caravans is a registered trademark of The Auto-Sleepers Group Ltd. This price list supersedes all others.